

# DOUBLE E COMPANY SHAFT SPECIFICATIONS

Please fax this completed sheet to (508)580-2915 for a formal quotation.

## COMPANY INFORMATION

Company Name: \_\_\_\_\_ Date: \_\_\_\_\_  
 Name: \_\_\_\_\_ Title: \_\_\_\_\_  
 Address: \_\_\_\_\_  
 City, State, ZIP, Country: \_\_\_\_\_  
 Telephone: \_\_\_\_\_ Fax: \_\_\_\_\_

## PRESENT APPLICATION

Equipment Manufacturer: \_\_\_\_\_ Model: \_\_\_\_\_  
 Size: \_\_\_\_\_ Speed: \_\_\_\_\_  
 Tension (PLI): \_\_\_\_\_ Web Material: \_\_\_\_\_  
 Air Line Pressure Available: 60 PSI  80 PSI  100 PSI   
 Bearing Material / Type: Steel  Brass  Cam Followers   
 Safety Chucks  Other: \_\_\_\_\_

## GENERAL SPECIFICATIONS

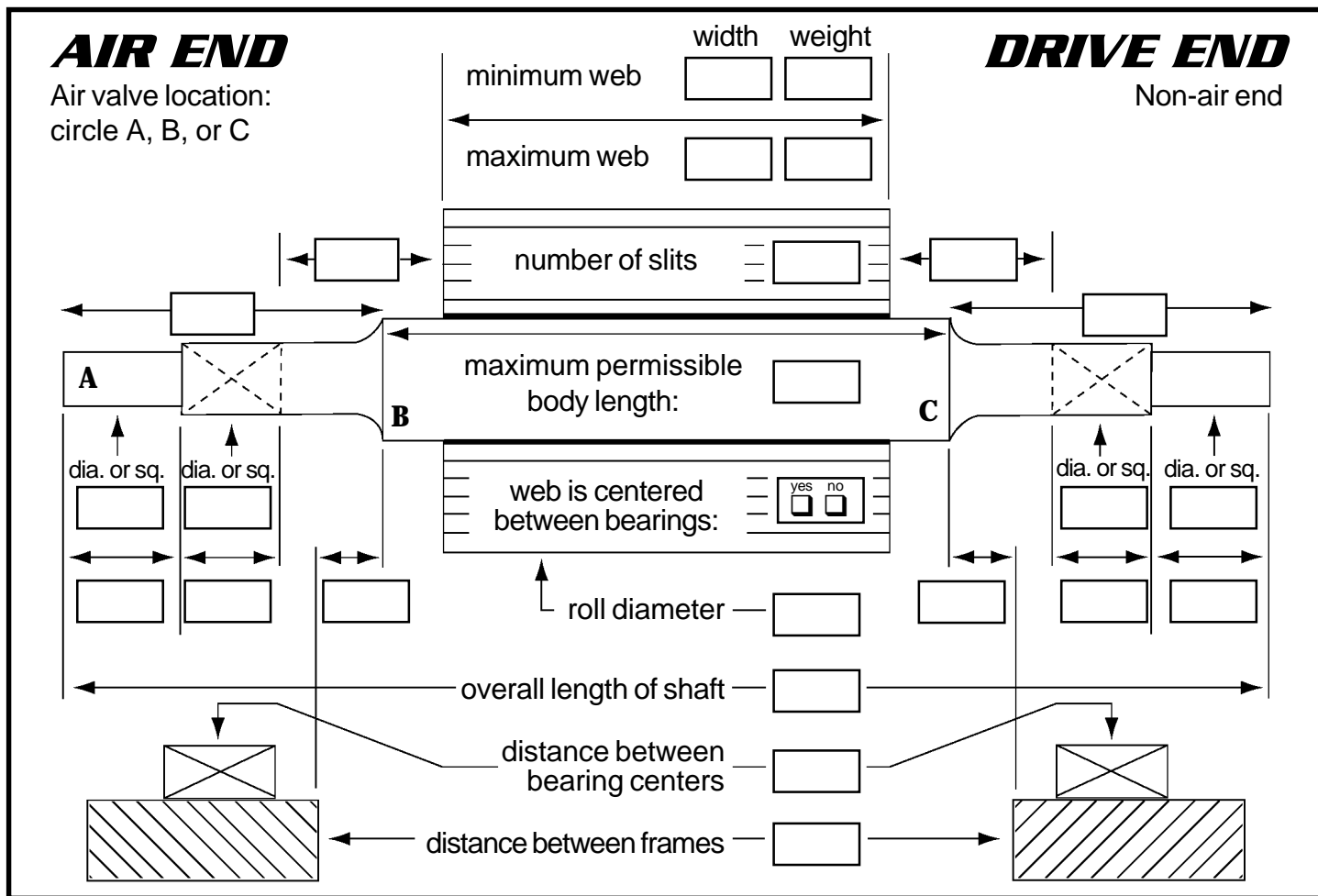
Actual Shaft Diameter: \_\_\_\_\_  
 Nominal Core I.D.: \_\_\_\_\_  
 Core Material: \_\_\_\_\_  
 Wall Thickness: \_\_\_\_\_  
 Core Manufacturer & Grade: \_\_\_\_\_  
 Steel-Capped Cores: All  None  Some

## PRESENT SHAFT

Manufacturer: \_\_\_\_\_  
 Material: \_\_\_\_\_ Wall Thickness: \_\_\_\_\_  
 Weight: \_\_\_\_\_ Quantity Required: \_\_\_\_\_

## PROBLEMS W/PRESENT SHAFTS

Weight  Deflection  Maintenance  Other \_\_\_\_\_



## CHECK APPLICATION

Please mark all that apply beneath the figures. Sketch journal details and dimensions of keyways, bearing fits, etc. on a separate sheet.

